

Chapter 3 Software Setup

Drivers, Utilities and Software Installation

- Support CD:

This series of mainboards will always be shipped with a Support CD which contains those necessary driver files, Application Softwares and some helpful utilities. It is a user-friendly, auto-run CD which will open itself up in a CD-ROM automatically.

- Contents of Support CD:

For this series, user will be able to find in the Support CD the following drivers and utilities supported by Chipset VIA Apollo P4X266:

1. VIA 4-in-1 Drivers;
2. AC'97 Drivers;
3. Hardware Monitor Utility;

- Optional Floppy Diskette:

For SL-85DRV⁺ and SL-85DRV⁺-X, a floppy diskette containing Promise RAID Drivers will also be added to the package for the IDE RAID setup.

This chapter is devoted to describing the installations of all these essential drivers and utilities on Windows 9X, Windows ME and Windows 2000. The installation procedures for all these operating systems are programed into an auto-run mode. What users have to do is read and follow the pop-up instructions to carry out the installation. We therefore take the installation on Windows 98 as the general illustration hereby. On occasion of RAID Drivers installation where different status of your operating systems requires different installation procedures, we also insert respective installation procedures for various operating systems.

The priority of driver installation should also be noted. Users are recommended to take the following installation order:

3-1 Open Support CD and choose your drivers

3-2 4-in-1 Drivers Installation

3-3 AC'97 Audio CODEC Drivers Installation

3-4 Hardware Monitor Utility Installation

3-5 Promise RAID Drivers Installation

(for SL-85DRV⁺ and SL-85DRV⁺-X only)

3-1 Open up the Support CD and choose Drivers and Utilities:

- (1) Please put the Support CD enclosed in your mainboard package into the CD-ROM drive. In a few seconds, the Main Menu will automatically appear, displaying the contents to be installed for this series:

Install VIA 4in1 Driver
Install VIA AC'97 Audio Driver
Install Hardware Monitor Utility
Install Acrobat Reader
Browse CD-ROM
Exit

- (2) In case your system does not open the Support CD automatically, please click to the following path to enter the Main Installation Menu:

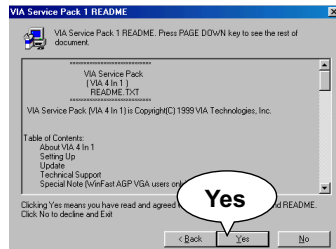
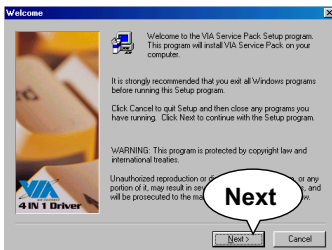
D:\Autorun.exe (assuming that your CD-ROM Drive is Drive D)

- (3) Users are recommended to install all the drivers and utilities at a time, though they can be installed separately. Also, we should take "VIA 4in1 Driver" as first installation priority to optimize the VIA system.

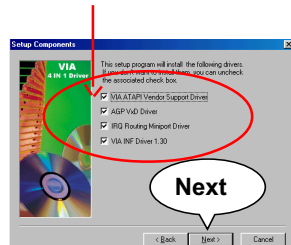
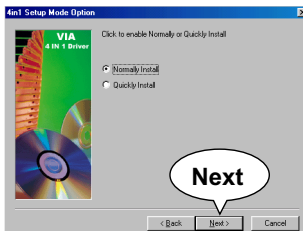
From next section, we provide detailed descriptions of all these installations with graphical illustrations.

3-2 Proceed to VIA 4-IN-1 Drivers Installation

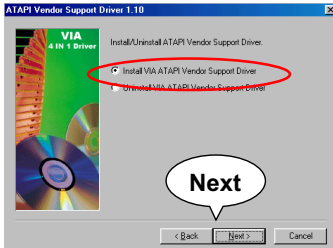
1. Following the procedures of opening the Support CD, click to “VIA 4in1 Drivers” to proceed.
2. The VIA Service Pack InstallShield Wizard will pop up to guide you to the VIA Service pack installation. Click “Next” button to continue.
3. “VIA Service Pack README” screen will appear, please click the “Yes” button to agree with the Licence Agreement and continue.



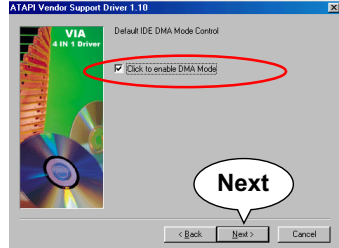
4. On the screen below, check “Normally Install” and click “Next” to continue. (If you check “Quickly Install”, you will skip the detailed procedures of the VIA 4in1 Setup.)
5. Select the checkbox as below and click “Next” to continue:
 - ☒ VIA ATAPI Vendor Support Driver
 - ☒ AGP VxD Driver
 - ☒ IRQ Routing Miniport Driver
 - ☒ VIA Chipset Function's Registry



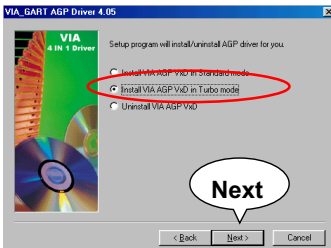
6. Select “Install VIA ATAPI Vendor Support Driver” checkbox, then click the “Next” button to continue.



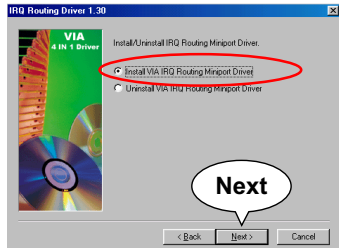
7. Click on “Click to enable DMA Mode” checkbox to enable DMA function, then click the “Next” button to continue.



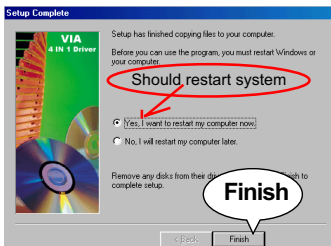
8. Select “Install VIA AGP VxD” in turbo mode and press “Next” button to continue.



9. Select “Install VIA IRQ Routing Miniport Driver” checkbox, then click the “Next” button to continue.



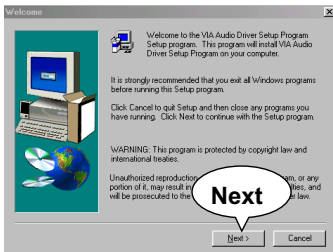
10. After all these setup procedures have finished, you should restart your computer by clicking on “Finish” so as to put VIA 4in1 drivers into effect and proceed to second driver installation.



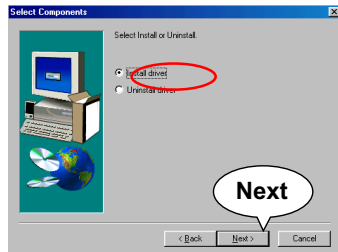
3-3 Proceed to AC'97 AUDIO DRIVER Installation

1. Following the installation of VIA 4in1 drivers, you have to restart system so that your system can be reconfigured with VIA 4in1. When restarting procedures finish, please open the Support CD with your CD-ROM to enter the Main Installation Menu. Then click to "Install VIA AC'97 Audio Driver".

2. The VIA Audio Driver Setup InstallShield Wizard will pop up to guide you to the VIA Audio Driver installation. Press "Next" button to continue.



3. When asked to install or remove the audio driver, please select "Install" and press "Next" button to continue.



4. After all these setup procedures have completed, click to "Finish" button to exit the Installation program.



3-4 Proceed to HARDWARE MONITOR Installation

1. Following the installation of AC'97 driver, you have to install Hardware Monitor manually. Please click to the following path to execute Hardware Monitor installation:

D: \ Hardwaremonitor\ ITE2 \ Install.exe

(assuming that your CD-ROM Drive is Drive D)

2. In case you are already on the Installation Main Menu of the Support CD, please click to the "Install Hardware Monitor". Instantly, a message shows up to inform you of the correct path of installing "Hardware Monitor". Please Exit the message and follow the path as instructed:

For user who wants to install Hardware monitor utility, please install it through this path:

D:\hardwaremonitor\ITE2\install.exe
(assuming that your CD-ROM Drive is Drive D)

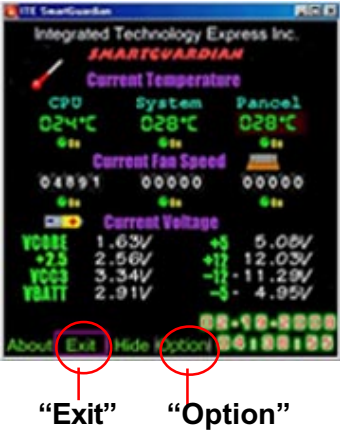
3. Once you enter the path and click to the file "Install.exe". Instantly the "ITE SmartGuardian Install" pops up. Please click to "Install" to continue.



4. In a few seconds, installation of Hardware Monitor is complete. Please click on the “OK” Dialog Box to finish installation.





5. To display the Hardware Monitor Utility, just click on the “ITE SMARTGUARDIAM” icon in your program file, and the following screen of Smartguardian Control Panel will show up, displaying the information about system temperatures, voltages and Fan speed. Clicking to the “Option” menu of the Control Panel, you can also change some Value settings for your system to optimize its performance.

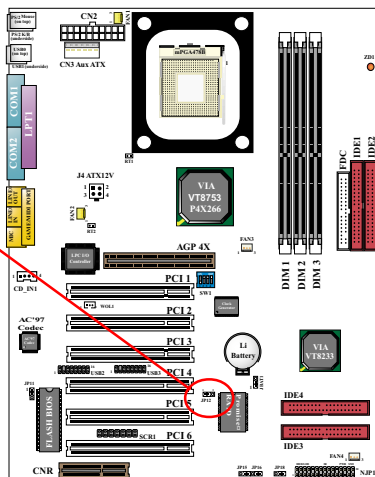


3-5 Install Driver for Promise RAID Controller

Promise RAID Controller is built on SL-85DRV⁺ and SL-85DRV⁺-X. Before installing the driver for Promise RAID Controller, please check the following points:

- (1) Set up Jumper Jp12 on board to enable Promise RAID Controller.

Jp12 RAID Controller Select	
1 	Enabled (default)
1 	Disabled



- (2) Get ready the floppy diskette containing the FastTrak100-Lite Drivers for various Windows systems.
- (3) The RAID Controller Drivers installation procedures will differ among different operating systems and situations. Please refer to Chapter 5 of this manual to install your RAID drivers and disk arrays.