

## Chapter 3 Software Setup

### Drivers, Utilities and Software Installation

- Support CD:

This series of mainboards will be shipped with a Support CD which contains those necessary driver files, Application Softwares and some helpful utilities. It is a user-friendly, auto-run CD which will open itself up in a CD-ROM automatically.

- Contents of Support CD:

For this series, user should be able to find in the Support CD the following drivers and utilities:

1. INF Utility (Intel Chipset Software Installation Utility);
2. Intel Application Accelerator ( IAA );
3. DirectX
4. Graphics Drivers
5. AC'97 Audio Drivers
6. Hardware Monitor Utility
7. Other Drivers (including Network and Intel USB)

This chapter is devoted to describing the installations of all these essential drivers and utilities on Windows 9X, Windows ME, Windows 2000 and Windows XP. The installation procedures for all these operating systems are all programmed into an auto-run mode. What users have to do is to read and follow the pop-up instructions to carry out the installation. We therefore take the installation on Windows 98 as the general illustration hereby.

The priority of drivers to be installed should also be noted. Users are recommended to take the following installation orders :

**3-1 Open up the Support CD**

**3-2 Intel Chipset Software Installation Utility ( INF Utility )**

**3-3 Intel Application Accelerator ( IAA )**

**3-4 DirectX**

**3-5 Graphics Drivers**

**3-6 AC'97 Audio Drivers**

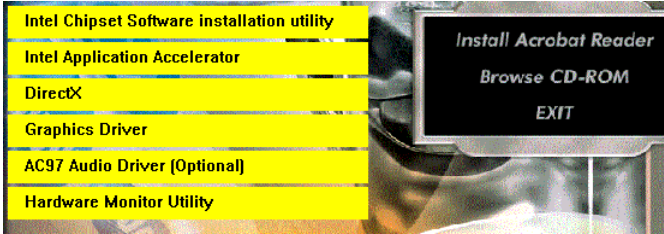
**3-7 Hardware Monitor Utility**

**3-8 LAN Drivers (for 85MIR-L only)**

**3-9 Intel USB Drivers**

### 3-1 Open up the Support CD

1. Please put the Support CD enclosed in your mainboard package into the CD-ROM drive. In a few seconds, the Main Menu will automatically appear, displaying the contents to be installed for this series:



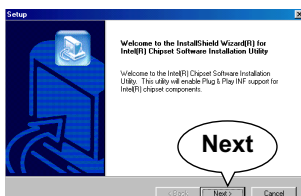
2. In case your system does not open the Support CD automatically, please click to the following path to enter the Main Installation Menu:

D:\Autorun.exe (assuming that your CD-ROM Drive is Drive D)

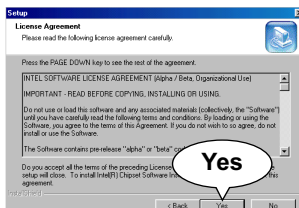
3. We should take “Intel Chipset Software installation Utility” as first installation priority to optimize the Intel system.  
From next section, we provide detailed descriptions of all these installations with graphical illustrations.

## 3-2 Install “Intel Chipset Software Installation Utility”

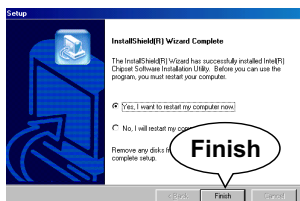
1. Following the procedures of opening the Support CD, click to “Install Intel Chipset software installation Utility” to proceed.
2. The Intel Service Pack InstallShield Wizard will pop up to guide you to the Intel Service pack installation. Press “Next” button to continue.



3. “Intel Software License Agreement” screen will appear, please click the “Yes” button to agree with the Licence Agreement and continue.



4. After all the setup process is finished, please restart your computer by clicking on “Finish” so as to take the Utility into effect.

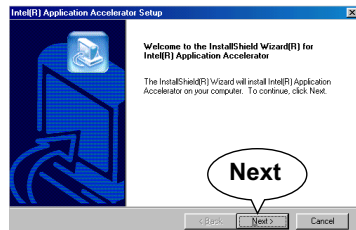


### 3-3 Install “Intel Application Accelerator”

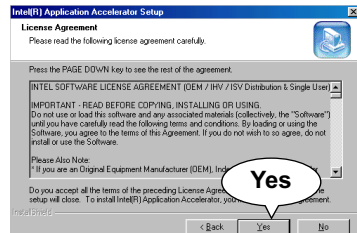
IAA supports all Windows 98/98se/Mellennium/NT4/2000/XP with Pentium III / 4 processor. Installations of this software for these operating systems are similarly programed to an auto-run mode. It is typically designed to improve performance of the storage sub-system and overall system performance. Below is a model installation on Windows 98. Users of Windows Me/NT4/2000/XP can also follow this example for IAA installation.

1. Following the procedures of opening the Support CD, click to “ Intel Application Accelerator” to proceed.

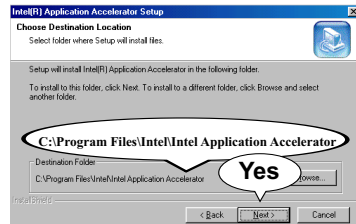
2. On the “InstallShield Wizard” screen, Click on “Next” to continue.



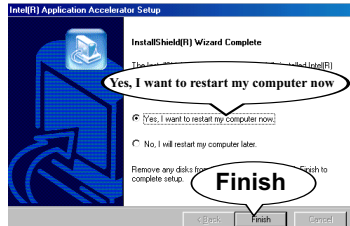
3. On the “Licence Agreement” screen, click on “Yes” to continue.



4. On "Choose Destination Location" screen, press **"Yes"** to continue.



5. On "InstallShield Wizard Complete" screen, choose "Yes, I want to restart my computer now" and press "finish" to restart. Remember you must restart computer to put setup into effect.

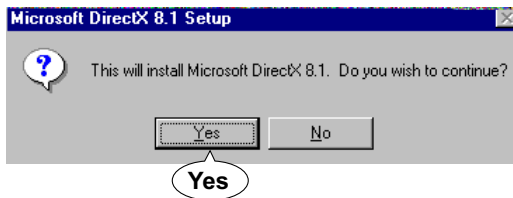


### 3-4 DirectX Installation

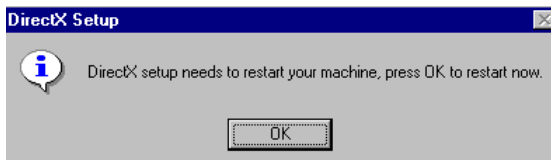
Following the installation of IAA, you have to restart system so that your system can be reconfigured with the driver just installed. When restarting procedures finish, please open the Support CD with your CD-ROM to enter the Main Installation Menu.

Then click to “Install DirectX”. This utility will support a better graphic display of the built-in VGA interface.

1. When the screen of “Microsoft DirectX 8.X Setup” appears, please press “Yes” button to continue.



3. After all the setup procedures have completed, click to “Finish” button to exit the Installation program and re-start your system.



### 3-5 Graphics Driver Installation

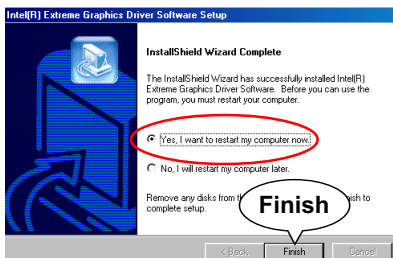
Following the installation of DirectX, you have to restart system so that your system can be reconfigured with the utility. When restarting procedures finish, please open the Support CD with your CD-ROM to enter the Main Installation Menu.

1. For installation of on-board VGA driver, you must first connect the monitor to the on-board VGA connector. Then click to “Install Graphics Driver”. The Graphics Driver is specifically for on-board VGA.

2. When the screen of “Intel(R) Extreme Graphics Driver Software Setup” appears, please press “Next” button to continue.



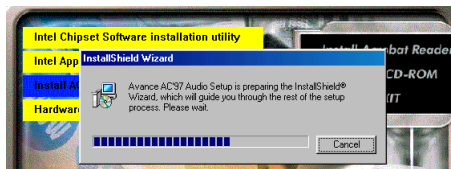
3. After all the setup procedures have completed, click to “Finish” button to exit the Installation program and re-start your system.



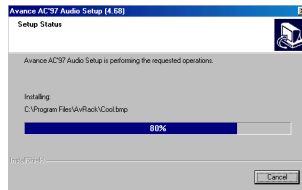
### 3-6 AC'97 Audio Driver Installation

Avance AC97 Audio Codec on board, AC'97 2.2 compatible stereo audio code for PC multimedia systems. Avance AC'97 Audio Codec Driver is provided in Support CD for user's installation.

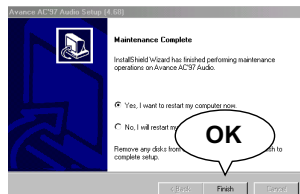
1. Following the procedures of opening the Support CD, click to "AC'97 Audio Driver" to proceed.
2. Instantly, the "installShield Wizard" screen appears to guide you through the "Avance AC'97 Audio Setup".



3. instantly, the Setup program proceeds to install the softwares which include AC'97 driver and AVRack. (If you want to stop setup, click the "Cancel" button.)



4. After the setup process is finished, please check the radial button "Yes, I want to restart my computer now." and click "OK" to restart your system.





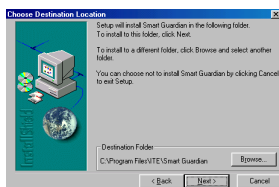
## 3-7 Install Hardware Monitor Utility

### 3-7.1 Installation

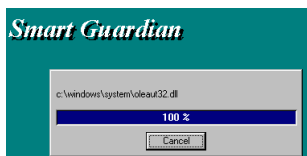
Hardware Monitor is built in chip IT8712F of this series. Its installation is programmed to a fully automated mode on Windows 9X/Me/NT4/2000/XP. User can follow the model installation below for its installation on various Windows System.

1. Following the procedures of opening the Support CD, click to “Hardware Monitor Utility” to proceed.
2. Instantly the “Smart Guardian Setup” screen appears to announce the setup of Hardware Monitor software “Smart Guardian”.

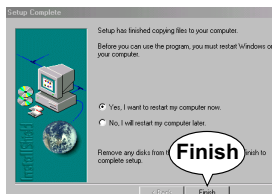
3. Next, the Setup Program will suggest to you the destination directory where the “Smart Guardian” will be installed. Select the Program folder and click “Next” to continue.



4. Instantly, Setup Program starts to copy files and install the software.

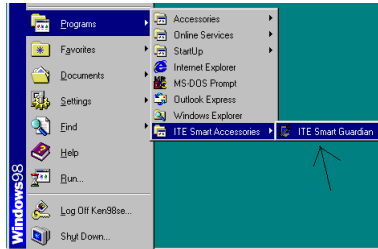


4. In one or two second, the “Setup complete” screen appears. Click “Finish” to restart your computer so that the Utility can be put into effect.

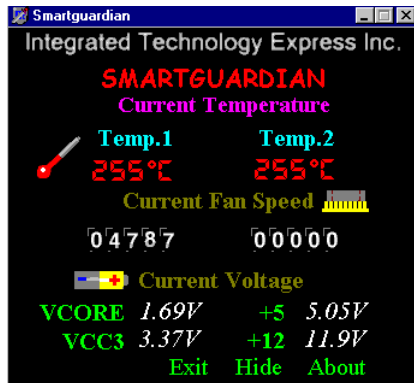


### 3-7.2 Verification

1. After restarting your computer, click “Start” and choose the path \Programs \ITE Smart Accessories\ITE Smart Guardian to open the main window of the Hardware Doctor.



2. Instantly, the Smartguardian Main Panel appears, telling you the CPU current temperature, CPU current Voltage and Current fan speed.

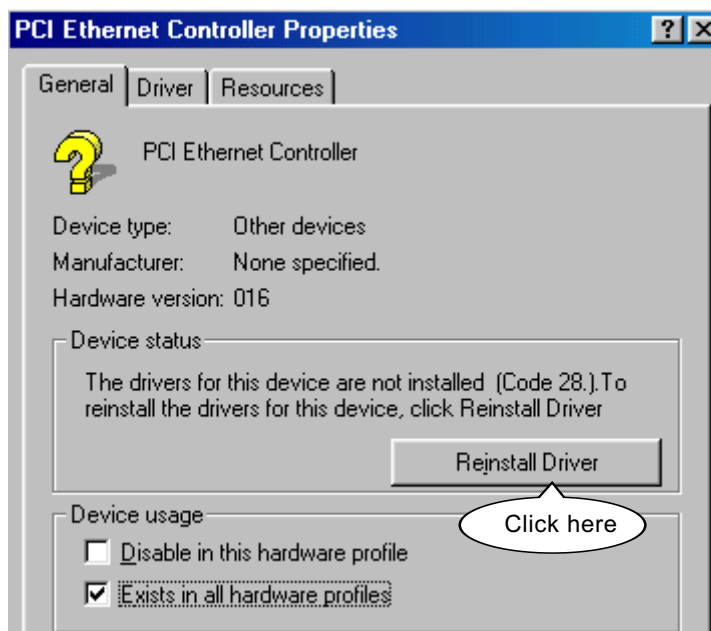


### 3-8 Install LAN Drivers (for 85MIR-L only)

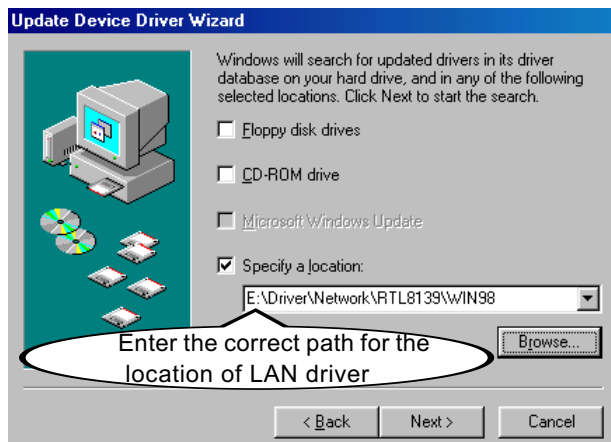
#### 3-8-1. RTL8139C LAN driver on Windows 9X

The LAN driver contained in the Support CD is not included in the Autorun Menu. To install RTL8139C LAN driver on Windows 9X, please follow the steps shown below:

1. On the "Start" screen of your system, please click to the following path:  
    \My Computer\properties\Device manager
2. In the "Device manager" screen, you can see the item "PCI Ethernet Controller" with a yellow question mark on its left side, which indicates that the LAN controller is already detected by system but the driver for this on-board RTL8139C Ethernet Controller is not installed yet. Please point to this item with your mouse and double click on it (or click the "Properties" button).
3. Instantly, the "PCI Ethernet Controller Properties" screen shows up. Please click the "General" bar to continue.
4. In the "General" screen, click "reinstall Driver" button to continue. Please note that the status of "Device Usage" should stay at "Exists in all hardware profiles".



5. In the "Update device Driver Wizard" screen, click "Next" to continue until you see a dialog box asking you to "Specify a location" for the driver. You should **now** insert the Support CD into your CD-ROM.
6. As illustrated in the picture below, check the item "Specify a location" and click the "Browse" button to find out the correct path for the driver. Supposing your CD-ROM drive is Drive E, please type: E:\Driver\Network\RTL8139\Win98 into the blank bar. (Please note that both RTL8139C and RTL8139C controllers are supported by Driver RTL8139. ) Then click the "Next" button to continue.



7. The Update Device Driver Wizard will then go on installing the driver, until the "Insert Disk" dialog box shows up. Please withdraw your Support CD and insert the Win 98 CD-ROM into the CD-ROM drive for updating system and click "OK" to continue.
8. The Update Device Driver Wizard will then proceed to update the system with the LAN driver. When the "Finish" screen shows up, click "Finish" to continue.
9. Final Dialog box will appear to remind you that you must restart your computer to finish updating the new hardware. Please click "Yes" to restart system and finish the LAN driver installation.

### 3-8-2. RTL8139C LAN driver on Windows NT4.0

1. When you newly install Win NT4, the Setup program will ask you whether your computer will participate on a network. please check "Do not connect this computer to a network at this time" and continue with your installation. That means, you are going to install the LAN Adapter and driver after you have finished system installation. By this way, you will set up your LAN Adapter and driver more surely.
2. If you have now installed Win NT4 in your computer, please boot your system and in the "Start" screen click the following path to install your computer networking:  
    \Start\Settings\Control Panel\Network (double click)
3. Instantly, a dialog box pops up, asking you, "Windows NT Networking is not installed. Do you want to install it now?" Please click "Yes" to continue.
4. The Network Setup Wizard will then proceed to guide you to the installation of LAN Adapter and Driver, until the "Select Network Adapter" screen pops up, on which you should click "Have Disk" to install the on-board RTL8139C LAN Controller.
5. Instantly, the "Insert Disk" dialog box pops up. You should **now** insert the Support CD into your CD-ROM drive, and then type to the white bar the correct path for the location of the LAN driver. Supposing your CD-ROM drive is drive D, please type the following path:  
    D:\Driver\Network\RTL8139\Winnt4 and click "OK" button to continue. (Controller RTL8139C is supported by Driver RTL8139)
6. Instantly, the Setup program detects the "Realtek RTL8139(A/B/C/8130) PCI Fast Ethernet Adapter" and shows it on the "Select OEM Option" screen. Please click "OK" to continue.
7. The Setup program will then proceed to install the RTL8139 Adapter and then other networking components such as TCP/IP protocol.
8. During the setup process, if "windows NT Setup" needs to copy some Windows files, you should then withdraw the Support CD and insert back the Win NT4 CD-ROM into your CD-ROM drive to continue.
9. After you have finished other networking components setup, you should restart your syustem to put all the new setups into effect.

10. To verify that the onboard RTL8139C Controller has been set up in system, please click “Start”, then “Control Panel”, then “Network”.
11. In the “Network” screen, click the “Adapter” bar. You can now see the “Realtek RTL8139(A/B/C/8130) PCI Fast Ethernet Adapter is already installed in system.

### **3-8-3. RTL8139C LAN driver on Win ME / 2000 / XP**

1. When you newly install Windows ME , Windows 2000or windows XP, the system will detect the LAN Controller on board and configure it automatically into system. Therefore, users need not bother to install the LAN controller into these operating systems.
2. To verify the existence of RTL8139C Controller and Driver, please enter the “Control Panel” of your system and click “Network” to open the “Configuration” screen. You can then see the “Realtek8139 (A/ B/C) PCI Fast Ethernet Adapter” is already installed in system.

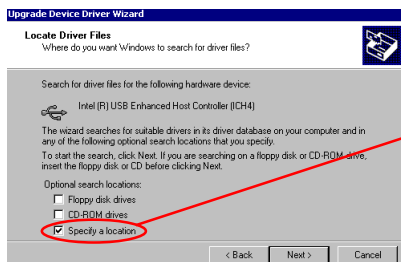
### 3-9 Install USB 2.0 Driver for Win2000 or WinXP

USB V2,0 with its 480Mb/s transfer rate supports operating system Win2000 and WinXP with Intel USB drivers and Microsoft USB drivers. USB Driver installation procedures are of similar steps in Win2000 and WinXP. The point is the Intel USB drivers are already open to Intel Chipset users, while Microsoft USB drivers are still reserved to itself. Users should seek support of Microsoft USB drivers on their own in Microsoft official web site. The following procedures are for both Intel USB drivers and Microsoft USB drivers:

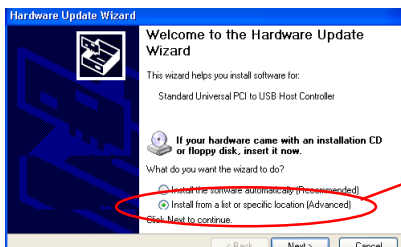
1. In Win2000or WinXP, insert the Support CD into CD-ROM drive D (supposing the CD-ROM drive is "D").
2. Take the following path to search for the USB 2.0 driver for installation:

My Computer(right click of Mouse)\Properties\  
Hardware\Device Manager\  
Universal Serial Bus(USB) Controller (left double click of Mouse)\  
Driver\Update Driver\

3. Instantly the "Upgrade Device Driver Wizard" will show up on screen. Click "Next" to continue.
4. Instantly, the Wizard Program will guide you through to search for the USB driver.
5. On the following "Upgrade Device Driver Wizard" screen, Tick "Specify a Location" and mouse click "Next" button to continue.



Specify the driver location  
in "Win2000".

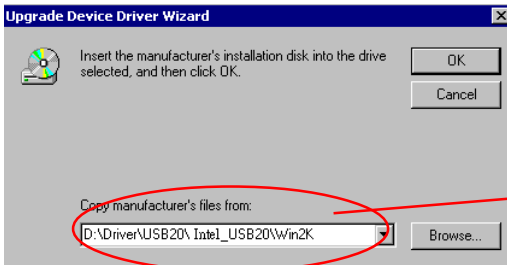


Specify the driver location  
in "WinXP".

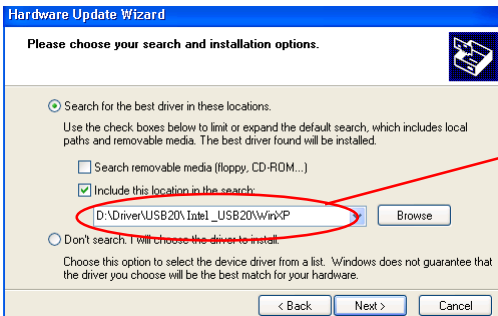
6. On the following dialog box, type the following path and mouse click "OK" button to install the Intel\_USB 2.0 driver first:

For Win2000: d:\driver\usb20\Intel\_USB20\Win2K

For WinXP: d:\driver\usb20\Intel\_USB20\WinXP



Search and install the Intel\_USB20 driver before installing "Microsoft\_USB20 driver in "Win2000".



Search and install the Intel\_USB20 driver before installing "Microsoft\_USB20 driver in "WinXP".

7. After installing Intel\_USB20, the program will prompt you to install "Microsoft\_USB20" driver on the following dialog box. Since Microsoft\_USB2.0 is still reserved to Microsoft itself, users are recommended to seek Microsoft support on their own in the Microsoft web site.