

Chapter 3 Software Setup

Drivers, Utilities and Software Installation

Support CD:

This mainboard will be shipped with a Support CD which contains those necessary driver files, Application Softwares and some helpful utilities. It is a user-friendly, auto-run CD which will open itself up in a CD-ROM automatically.

Contents of Support CD:

For this mainboard, user will be able to find in the Support CD the following drivers and utilities:

1. VIA 4-in-1 Drivers;
2. AC'97 Audio Driver;
3. DirectX
4. Graphics Driver
5. Hardware Monitor Utility;
6. LAN Driver (for 85MIV-L only)

This chapter is devoted to describing the installations of all these essential drivers and utilities on Windows 9X, Windows ME , Windows 2000 and Windows XP. The installation procedures for all these operating systems are programed into an auto-run mode. What users have to do is read and follow the pop-up instructions. We therefore take the installation on Windows 98 as the general illustration hereby.

The priority of driver installation should also be noted. Users are recommended to take the following installation order:

3-1 Open Support CD and choose your drivers

3-2 4-in-1 Drivers Installation

3-3 AC'97 Audio Driver Installation

3-4 DirectX Installation

3-5 Graphics Driver Installation

3-6 Hardware Monitor Utility Installation

3-7 LAN Driver Installation (for 85MIV-L only)

3-1 Open up Support CD:

1. Please put the Support CD enclosed in your mainboard package into the CD-ROM drive. In a few seconds, the Main Menu will automatically appear, displaying the contents to be installed for this series:

Install VIA 4-in-1 Driver
Install AC'97 Audio Driver
Install DirectX
Install Graphics Driver
Install Hardware Monitor Utility
Install LAN Driver
Install Acrobat Reader
Browse CD-ROM
Exit

2. In case your system does not open the Support CD automatically, please click to the following path to enter the Main Installation Menu:

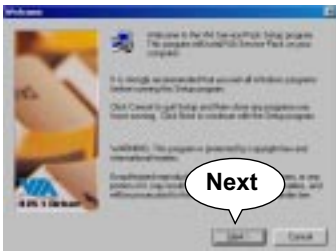
D:\Autorun.exe (assuming that your CD-ROM Drive is Drive D)

3. Users are recommended to install all the drivers and utilities at a time, though they can be installed separately.
Also, we should take "VIA 4-in-1 Driver" as first installation priority to optimize the VIA system.
From next section, we provide detailed descriptions of all these installations with graphical illustrations.

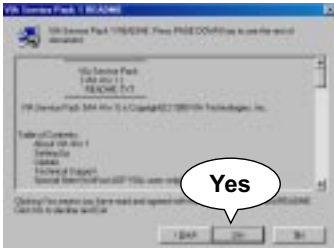
3-2 Proceed to VIA 4-in-1 Driver Installation

- 1. Following the procedures of opening the Support CD, click to “ VIA 4-in-1 Drivers” to proceed.

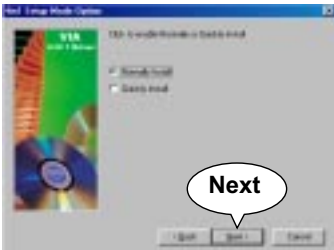
- 2. The VIA Service Pack InstallShield Wizard will pop up to guide you to the VIA Service pack installation. Click “Next” button to continue.



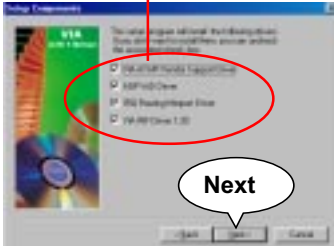
- 3. “VIA Service Pack README” screen will appear, please click the “Yes” button to agree with the Licence Agreement and continue.



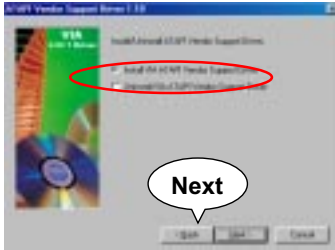
- 4. On the screen below, check “Normally Install” and click “Next” to continue. (If you check “Quickly Install”, you will skip the detailed procedures of the VIA 4-in-1 Setup.)



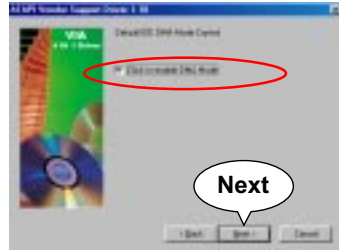
- 5. Select the checkbox as below and click “Next” to continue:
 - ☒ VIA ATAPI Vendor Support Driver
 - ☒ AGP VxD Driver
 - ☒ IRQ Routing Miniport Driver
 - ☒ VIA Chipset Function's Registry



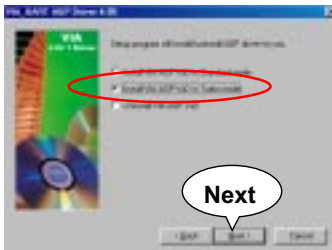
6. Select “Install VIA ATAPI Vendor Support Driver” checkbox, then click the “Next” button to continue.



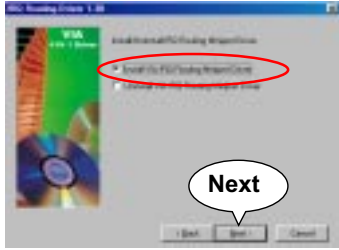
7. Click on “Click to enable DMA Mode” checkbox to enable DMA function, then click the “Next” button to continue.



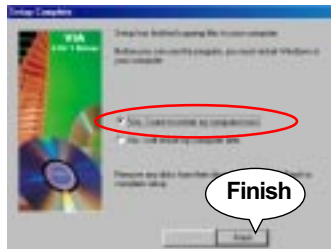
8. Select “Install VIA AGP VxD” in turbo mode and press “Next” button to continue.



9. Select “Install VIA IRQ Routing Miniport Driver” checkbox, then click the “Next” button to continue.

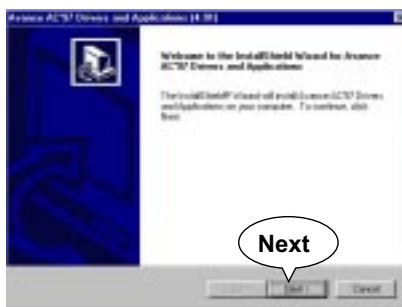


10. After all these setup procedures have finished, you should restart your computer by clicking on “Finish” so as to put VIA 4-in-1 drivers into effect and proceed to second driver installation.



3-3 Proceed to AC'97 AUDIO Driver Installation

1. Following the installation of VIA 4-in-1 drivers, you have to restart system so that your system can be reconfigured with VIA 4-in-1. When restarting procedures finish, please open the Support CD with your CD-ROM to enter the Main Installation Menu.
Then click to "Install AC'97 Audio Driver".
-
2. When the screen of "installShield Wizard for Avance AC'97 Drivers and Applications" appears, please press "Next" button to continue.



-
3. After all the setup procedures have completed, click to "Finish" button to exit the Installation program and re-start your system.



3-4 Proceed to DirectX Installation

1. Following the installation of AC'97 Audio driver, you have to restart system so that your system can be reconfigured with the driver just installed. When restarting procedures finish, please open the Support CD with your CD-ROM to enter the Main Installation Menu. Then click to "Install DirectX". This utility will support a better graphic display of the built-in VGA interface.
2. When the screen of "installShield Wizard for Avance AC'97 Drivers and Applications " appears, please press "Next" button to continue.



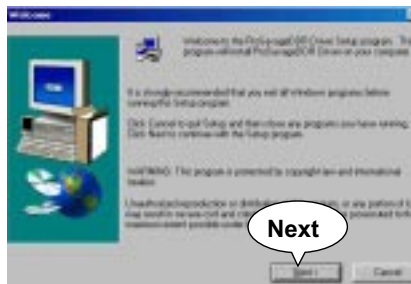
3. After all the setup procedures have completed, click to "Finish" button to exit the Installation program and re-start your system.

3-5 Proceed to Graphics Driver Installation

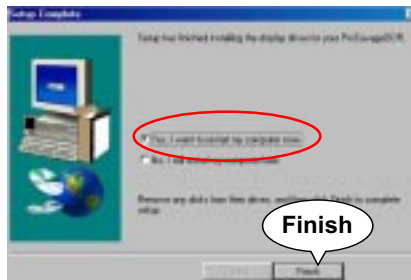
1. Following the installation of DirectX, you have to restart system so that your system can be reconfigured with the utility. When restarting procedures finish, please open the Support CD with your CD-ROM to enter the Main Installation Menu.

Then click to "Install Graphics Driver". The Graphics Driver is specifically for on-board VGA.

2. When the screen of "ProSavageDDR Driver Setup Program " appears, please press "Next" button to continue.



3. After all the setup procedures have completed, click to "Finish" button to exit the Installation program and re-start your system.



3-6 Proceed to Hardware Monitor Installation

1. Following the installation of Graphics Driver, you have to restart system so that your system can be reconfigured with the just installed driver. When restarting procedures finish, please open the Support CD with your CD-ROM to enter the Main Installation Menu. Then click to “Install Hardware Monitor Utility”.

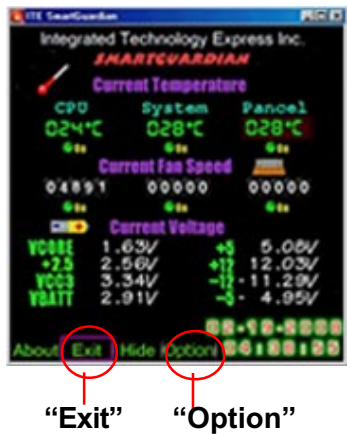
2. Instantly the “ITE SmartGuardian Install” pops up. Please click to “Install” to continue.



3. In a few seconds, installation of Hardware Monitor is complete. Please click on the “OK” Dialog Box to finish installation.



5. To display the Hardware Monitor Utility, just click on the “ITE SMARTGUARDIAM” icon in your program file, and the following screen of Smartguardian Control Panel will show up, displaying the information about system temperatures, voltages and Fan speed. Clicking to the “Option” menu of the Control Panel, you can also change some Value settings for your system to optimize its performance.



3-7 Install RTL8139C LAN Driver (for 85MIV-L only)

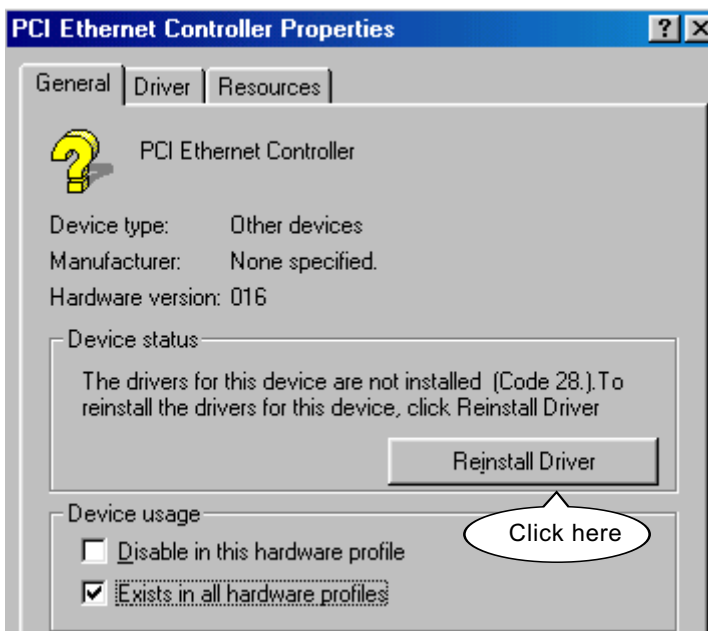
3-7-1. RTL8139C LAN driver on Windows 9X

The LAN driver contained in the Support CD is not included in the Autorun Menu. To install RTL8139C LAN driver on Windows 9X, please follow the steps shown below:

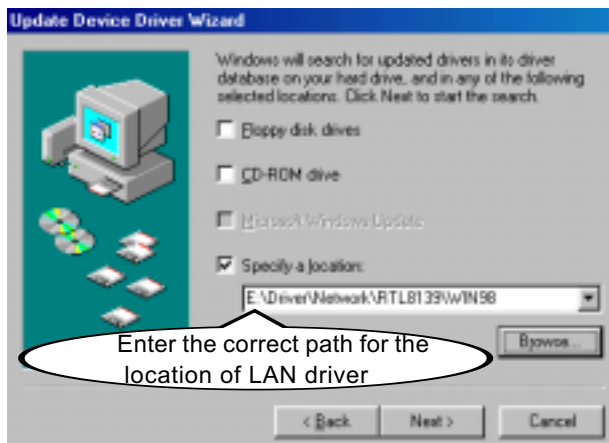
1. On the "Start" screen of your system, please click to the following path:

\\My Computer\\properties\\Device manager

2. In the "Device manager" screen, you can see the item "PCI Ethernet Controller" with a yellow question mark on its left side, which indicates that the LAN controller is already detected by system but the driver for this on-board RTL8139C Ethernet Controller is not installed yet. Please point to this item with your mouse and double click on it (or click the "Properties" button).
3. Instantly, the "PCI Ethernet Controller Properties" screen shows up. Please click the "General" bar to continue.
4. In the "General" screen, click "reinstall Driver" button to continue. Please note that the status of "Device Usage" should stay at "Exists in all hardware profiles".



5. In the “Update device Driver Wizard” screen, click “Next” to continue until you see a dialog box asking you to “Specify a location” for the driver. You should **now** insert the Support CD into your CD-ROM.
6. As illustrated in the picture below, check the item “Specify a location” and click the “Browse” button to find out the correct path for the driver. Supposing your CD-ROM drive is Drive E, please type:
E:\Driver\Network\RTL8139\Win98 into the blank bar. (If you are installing on Win 95OSR2, you should type W95OSR2 instead of Win98.) Then click the “Next” button to continue.



7. The Update Device Driver Wizard will then go on installing the driver, until the “Insert Disk” dialog box shows up. Please withdraw your Support CD and insert the Win 98 CD-ROM into the CD-ROM drive for updating system and click “OK” to continue.
8. The Update Device Driver Wizard will then proceed to update the system with the LAN driver. When the “Finish” screen shows up, click “Finish” to continue.
9. Final Dialog box will appear to remind you that you must restart your computer to finish updating the new hardware. Please click “Yes” to restart system and finish the LAN driver installation.

3-7-2. RTL8139C LAN driver on Windows NT4.0

1. When you newly install Win NT4, the Setup program will ask you whether your computer will participate on a network. Please check "Do not connect this computer to a network at this time" and continue with your installation. That means, you are going to install the LAN Adapter and driver after you have finished system installation. By this way, you will set up your LAN Adapter and driver more surely.
2. If you have now completed installation of Win NT4 in your computer, please boot your system and in the "Start" screen click the following path to install your computer networking:
 \Start\Settings\Control Panel\Network (double click)
3. Instantly, a dialog box pops up, asking you, "Windows NT Networking is not installed. Do you want to install it now?" Please click "Yes" to continue.
4. The Network Setup Wizard will then proceed to guide you to the installation of LAN Adapter and Driver, until the "Select Network Adapter" screen pops up, on which you should click "Have Disk" to install the on-board RTL8139C LAN Controller.
5. Instantly, the "Insert Disk" dialog box pops up. You should **now** insert the Support CD into your CD-ROM drive, and then type to the white bar the correct path for the location of the LAN driver. Supposing your CD-ROM drive is drive D, please type the following path:
 D:\Driver\Network\RTL8139\Winnt4 and click "OK" button to continue.
6. Instantly, the Setup program detects the "Realtek RTL8139(A/B/C/8130) PCI Fast Ethernet Adapter" and shows it on the "Select OEM Option" screen. Please click "OK" to continue.
7. The Setup program will then proceed to install the RTL8139 Adapter and then other networking components such as TCP/IP protocol.
8. During the setup process, if "windows NT Setup" needs to copy some Windows files, you should then withdraw the Support CD and insert back the Win NT4 CD-ROM into your CD-ROM drive to continue.
9. After you have finished other networking components setup, you should restart your syustem to put all the new setups into effect.

10. To verify that the onboard RTL8139C Controller has been set up in system, please click “Start”, then “Control Panel”, then “Network”.
11. In the “Network” screen, click the “Adapter” bar. You can now see the “Realtek RTL8139(A/B/C/8130) PCI Fast Ethernet Adapter is already installed in system.

3-7-3. RTL8139C LAN driver on Win ME / 2000 / XP

1. When you newly install Windows ME , Windows 2000 or windows XP, the system will detect the LAN Controller on board and configure it automatically into system. Therefore, users need not bother to install the LAN controller into these operating systems.
2. To verify the existence of RTL8139C Controller and Driver, please enter the “Control Panel” of your system and click “Network” to open the “Configuration” screen. You can then see the “Realtek8139 (A/B/C) PCI Fast Ethernet Adapter” is already installed in system.